

Metallic Liquidtight Cord and Cable Connectors

The Ranger® Series of Aluminum Liquidtight Cord Connectors

Application

- A liquidtight connector to connect flexible cord to an enclosure and provide adequate strain relief
- Form a mechanical grip and water and liquidtight seal
- Form a non-slip connection or termination for flexible cord

Cord & Cable Type

- S.J, SJE, SJEW, SJE0, SJE00, SJE00W, SJO, SJOW, SJO0, SJO0W, SJT, SJTW, SJTO, SJTOW, SJT00, SJT00W, SO, SOW, SO0, SO0W, SV, ST, STD, SVD

Features

- Available in straight or 90° designs
- Designed to accept a wide range of cables, offering nine fittings that cover cord ranges from .125" through .950"
- Slotted design gland nut to accommodate securing in tight spaces

- Installer can simply use screwdriver to get into the hard-to-reach area and secure the gland nut
- Marked with cable ranges and conduit hub sizes

Material

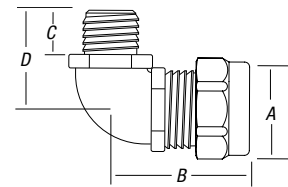
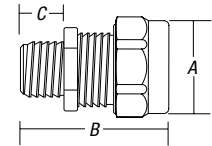
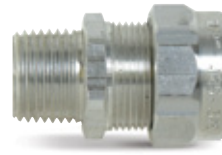
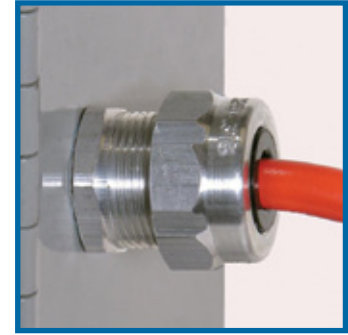
Body Copper-Free Aluminum
 Gland Nut, Grip..... Copper-Free Aluminum — All Series
 Bushing..... Thermoplastic Rubber
 Grip Ring..... Nylon

Environment Classification

Ordinary locations
 Wet or dry locations
 Temperature Range: -20° C to 105° C (-4° F to 221° F)

Range

Cord Range: .125" to .950"
 Hub Size Range: ½" to 1"



Aluminum Liquidtight Strain-Relief Connectors

| CAT. NO. | HUB SIZE | CORD RANGE (IN.) | DIMENSIONS (IN.) | | | | STD. PKG. QTY. | WT. PER 100 |
|------------------|----------|------------------|------------------|---------------------------------|----|----|----------------|-------------|
| | | | A | B | C | D | | |
| Straight | | | | | | | | |
| 2920AL | ½" | .125-.375 | 1½ | 1¾ | ¾ | — | 25 | 8.50 |
| 2921AL | ½" | .310-.560 | 1½ | 1¾ | ¾ | — | 25 | 8.05 |
| 2922AL | ½" | .500-.750 | 1½ | 1¾ | ¾ | — | 25 | 9.95 |
| 2930AL | ¾" | .125-.375 | 1½ | 1 ²⁵ / ₃₂ | ¾ | — | 10 | 12.30 |
| 2931AL | ¾" | .310-.560 | 1½ | 1 ²⁵ / ₃₂ | ¾ | — | 10 | 11.90 |
| 2932AL | ¾" | .500-.750 | 1½ | 1 ²⁵ / ₃₂ | ¾ | — | 10 | 11.50 |
| 2940AL | 1" | .310-.560 | 1½ | 1¾ | 1½ | — | 10 | 18.00 |
| 2941AL | 1" | .500-.750 | 1½ | 1¾ | 1½ | — | 10 | 16.00 |
| 2942AL | 1" | .700-.950 | 1½ | 1¾ | 3½ | — | 10 | 16.70 |
| 90° Elbow | | | | | | | | |
| 4960AL | ½" | .125-.375 | 1½ | 1¾ | ¾ | 1½ | 50 | 23.60 |
| 4961AL | ½" | .360-.560 | 1½ | 1¾ | ¾ | 1½ | 50 | 11.60 |
| 4970AL | ¾" | .125-.375 | 1½ | 1 ²⁵ / ₃₂ | 1½ | 1½ | 50 | 17.2 |
| 4971AL | ¾" | .310-.560 | 1½ | 1 ²⁵ / ₃₂ | 1½ | 1½ | 50 | 30.00 |
| 4972AL | ¾" | .500-.750 | 1½ | 1 ²⁵ / ₃₂ | 1½ | 1½ | 50 | 33.09 |
| 4980AL | 1" | .310-.560 | 1½ | 2½ | 1½ | 1¾ | 25 | 21.50 |
| 4981AL | 1" | .500-.750 | 1½ | 2½ | 1½ | 1¾ | 25 | 22.36 |
| 4982AL | 1" | .700-.950 | 1½ | 2½ | 1½ | 2 | 25 | 18.20 |

* It may be necessary to remove sufficient outer covering of cable to permit conductors to pass through connector body.

All items shown on this page are suitable for use in hazardous locations where general-purpose equipment is specifically permitted by the NEC®, NEC 501-4(b).

UL File No. E-13938 CSA File No. 52391

For wire mesh grips, refer to page E-142.